

Controlling color density

The printer's front panel provides an interface to adjust the density of the toner applied to the media. This feature compensates for the changes in density that can occur as toner cartridges or the imaging unit age. Follow these steps to adjust the color density:

1. Press the **Menu** button on the front panel. The display reads:

```
Help Pages  
<---    --->  Menu
```

2. Press the right arrow button so that the display reads:

```
Calibrate Colors  
<---    --->  Menu
```

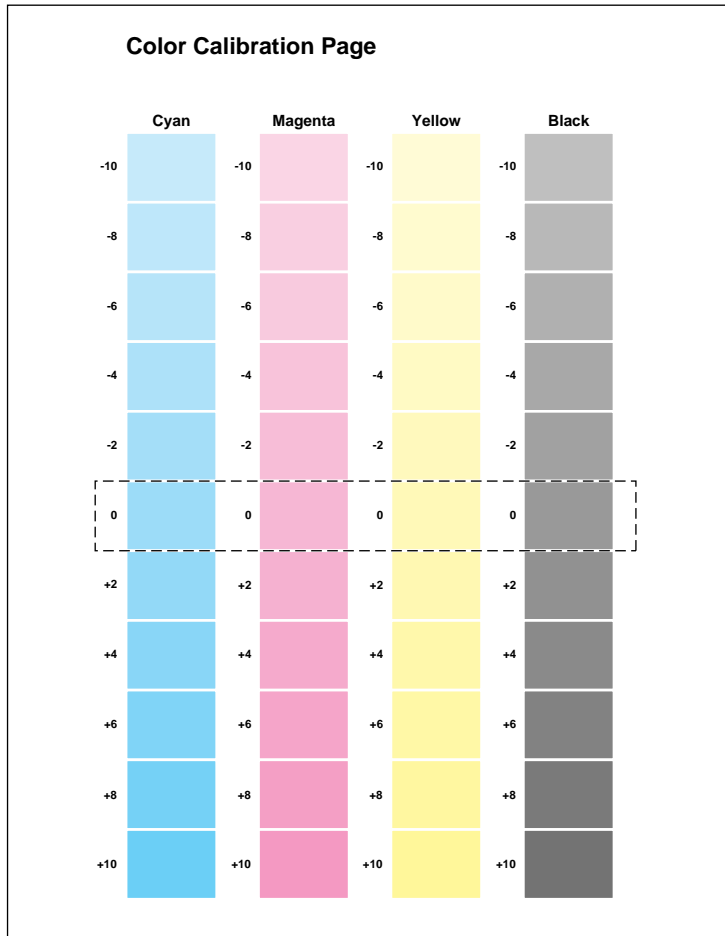
3. Press the **Menu** button to enter the Calibrate Colors menu.
4. Press the right or left arrow button so that the display reads:

```
Adjust each color  
<---    --->  Menu
```

5. Press the **Menu** button. The display reads:

```
Calibration Page  
<---    --->  Print
```

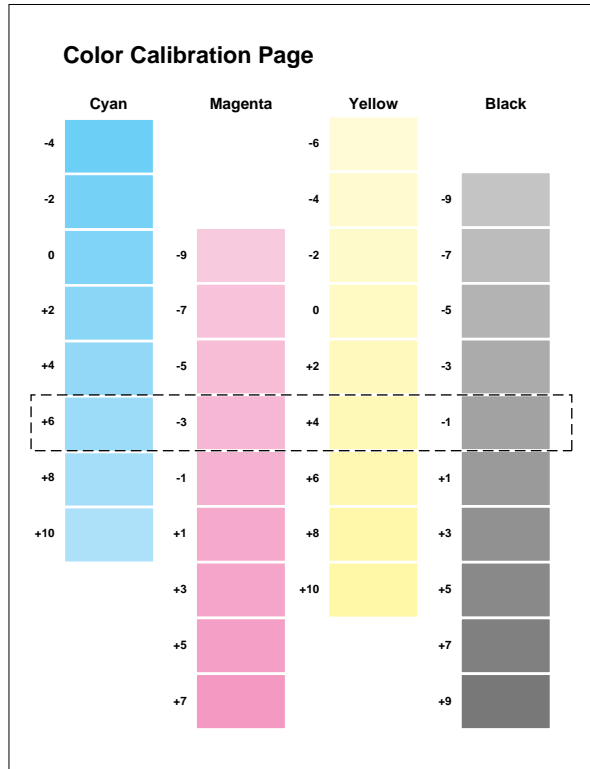
6. Press the **Print** button to print the Color Calibration Page. The current density setting for each color is indicated by the dashed line enclosure and the numeric value (-10 to +10) next to each color. The page also shows the ranges that you can select in the front panel. In the example on the next page, the density setting for each color is the default, 0.




7. Compare the printer's current density settings on the Color Calibration Page with the color density samples on the *Phaser 550 Quick Reference Card*:
 - a. Place the Color Calibration Page on at least 2 sheets of clean white paper in a well-lighted area.
 - b. Align the hole in the cyan color density sample on the *Phaser 550 Quick Reference Card* over the cyan column on the Color Calibration Page.
 - c. Decide which block on the Color Calibration Page most closely matches the density of the cyan sample on the *Quick Reference Card*. Make a note of the value (-10 to +10) associated with that block.
 - d. Repeat Steps a through c for each color.
 - e. Reprint the Color Calibration Page to check the adjusted density.
8. Adjust the density using the Calibrate Colors menu in the front panel. Refer to the [following table](#) for information on these settings.

9. After changing the density setting for any or all of the colors, reprint the Color Calibration Page, which shows the following:

- The dashed line enclosure reflects the changes you made to the settings. In this example, the density for each color is set to a different value.



9317-53

10. When you finish adjusting the colors, press the  button until the front panel displays Ready.

The following table shows the selections available in the Calibrate Colors menu, along with a brief explanation of each function.

Calibrate Colors menu selections

Menu item*	What it does	How it works
Adjust light/dark <---- ----> Menu	Lightens or darkens all toner colors.	<ul style="list-style-type: none"> ■ Press the Menu button.
Lighter/Darker:+0 * <---- ----> OK	Lightens or darkens all toner colors. The current Light/Dark setting reflects the <i>average value</i> of the four separate density settings. Each increment adjusts all four density values up or down the same amount. The available adjustment range is limited so that no single color exceeds the ± 10 value limit.	<ul style="list-style-type: none"> ■ To lighten colors, press the left arrow button (the number decrements in 1-point steps); then press the OK button. ■ To darken colors, press the right arrow button (the number increments in 1-point steps); then press the OK button.
Adjust each color <---- ----> Menu	Controls the color density for each color independently.	<ul style="list-style-type: none"> ■ Press the Menu button.
Color Calibration Page <---- ----> Print	Prints a sample of the current density setting and a range of settings for each color.	<ul style="list-style-type: none"> ■ Press the Print button.
Adjust <color>: <---- ----> Menu	Enters the menu to calibrate a single color.	<ul style="list-style-type: none"> ■ Press the Menu button.
Adjust <color>:+0 * <---- ----> OK	Calibrates the indicated color.	<ul style="list-style-type: none"> ■ To lighten this color toner, press the left arrow button (the number decrements in 1-point steps); then press the OK button. ■ To darken this color toner, press the right arrow button (the number increments in 1-point steps); then press the OK button.
Reset adjustments <---- ----> Menu	Resets the color calibration to the default settings.	<ul style="list-style-type: none"> ■ Press the Menu button; then press the Confirm button.

* An asterisk (*) on the front panel selection indicates the current setting.